

MOVIES IN THE PARK

CO-SPONSORED BY THE GLENDORA ROTARY CLUB

Thanks to the Glendora Rotary Club we are pleased to announce something special for our families! Join us for a fun-filled evening and watch kid-friendly films with your family. Come early and bring a picnic dinner! Seating is on the grass, so bring a blanket or beach chair. Movie showings will begin Friday evenings at sundown in the Larry R. Glenn Bandshell at Finkbiner Park in the West Oak Grove area. For more information, call (626) 914-8228.

FRIDAYS AT SUNDOWN

CHILDREN'S ACTIVITIES BEFORE THE MOVIE!

CO-SPONSORED BY THE GLENDORA KIWANIS CLUB & GLENDORA TRANSPORTATION

CONCERTS IN THE PARK

6:00PM ON SUNDAYS AT THE LARRY R. GLENN BANDSHELL AT FINKBINER PARK IN THE WEST OAK GROVE AREA FOR MORE INFORMATION, CALL (626) 914-8228

JULY 5	TOP GUN (1986) @ GLADSTONE PARK
JULY 12	SANDLOT @ FINKBINER PARK
JULY 19	TROLLS @ FINKBINER PARK
JULY 26	LITTLE GIANTS @ FINKBINER PARK
AUGUST 2	MIGRATION @ FINKBINER PARK
AUGUST 9	PAW PATROL - POLICE NIGHT OUT @ FINKBINER PARK

JUNE 23	THE ANSWER • CLASSIC ROCK
JUNE 30	4 LADS FROM LIVERPOOL • BEATLES TRIBUTE BAND
JULY 7	LA COUNTY SHERIFFS CONCERT BAND • PATRIOTIC CONCERT
JULY 14	KINGS OF 88 • PIANO ROCK
JULY 21	SMOKIN' COBRAS • ROCKIN' OLDIES ROAD SHOW
JULY 28	A TRIBUTE TO TAYLOR SWIFT
AUGUST 4	THE DREAMBOATS • OLD FASHION ROCK N' ROLL



RECREATION AND HUMAN SERVICES DEPARTMENT PRESENTS

LA FETRA TIMES

July

2024

FACILITY CLOSED ON JULY 4!

Fun Fact: July is recorded to be the hottest month in the northern hemisphere!

This issue contains:

- ◆ MOVIES & CONCERTS IN THE PARK
- ◆ TRIP HIGHLIGHT: SMORGASBURG
- ◆ PRESENTATIONS
- ◆ APPLE & IPHONE/ IPAD CLASSES
- ◆ VOLUNTEER HIGHLIGHT
- ◆ JULY MOVIES

PRINTING COURTESY OF PARTNERS OF LA FETRA



LA FETRA CENTER

333 E. Foothill Blvd., Glendora, CA 91741
 (626) 914-0560 / CityofGlendora.org
 Monday-Friday: 8:00am-4:30pm

Mission: The City of Glendora Recreation and Human Services Department, through the efforts of the Human Services Division at the La Fetra Center, strives to maximize the quality of life for older adults by providing programs that promote dignity and self-esteem; foster independence; facilitate social interaction; and dispel negative stereotypes about aging.

A.A.R.P.	(800) 424-3410	Glendora Public Library	(626) 852-4891
Adult Protective Services	(888) 202-4248	Glendora Welfare Association	(626) 857-1181
Animal Control – Inland Valley Humane Society	(909) 623-9777	Graffiti Hotline	(626) 963-8540
Center for Health Care Rights	(800) 824-0780	Homelessness - General Questions	(626) 852-5200
City Hall – Glendora	(626) 914-8200	In-Home Supportive Services	(909) 802-2474
Elder Abuse Hotline	(877) 477-3646	Meals on Wheels	(626) 960-2995
Foothill Presbyterian Hospital	(626) 963-8411	Medicare	(800) 633-4227
Get About Transportation	(909) 596-5964	Metro Access Services	(800) 827-0829
Glendora Historical Society	(626) 963-0419	Ombudsman (Long Term Care)	(323) 721-1343
Glendora Mini-Bus	(626) 914-8233	Post Office – Glendora	(626) 857-9127
		Social Security	(800) 772-1213
		Glendora Office	(866) 964-6045

STAFF CONTACTS

Debbie Lopez, Human Services Manager — dlopez@cityofglendora.org
 Erik Deurmeier, Human Services & Outreach Coordinator (Outreach & Homeless) — edeurmeier@cityofglendora.org
 Rachel Orosz, Human Services Supervisor (Activities & Trips) — rorosz@cityofglendora.org
 Emily Bufanda, Office Assistant (Rentals & Maintenance) — ebufanda@cityofglendora.org
 Carol Stellato, Recreation Specialist (Volunteers & Referrals) — cstellato@cityofglendora.org

PARTNERS OF LA FETRA

Partners of La Fetra is a charitable, non-profit organization established to support the Glendora La Fetra Center in an effort to enhance the quality of life of the adult population of the City of Glendora. Donations are tax deductible as provided by law. Membership is open to any person: dues are \$10 per year, per person. The *La Fetra Times* is available for mailing for \$12 per year, or can be combined with the Partners Membership for \$20 per year.

T D T O A S A	T O S T A D A
E A C H I N D L A	E N C H I L A D A
C A O T	T A C O
B U R O I R T	B U R R I T O
T I U S A T Q O	T A Q U I T O S
C H E I L L R E N O L E	C H I L E R E L L E N O
A M L T A E	T A M A L E
U A Q I E S L A D L	Q U E S A D I L L A
A L A T U S F	F L A U T A S
B N S E A	B E A N S
N O H C S A	N A C H O S
I R E C	R I C E
I M G A H C A H I C N	C H I M I C H A N G A
G A C E U A L M O	G U A C A M O L E
C A E N R A D A S A	C A R N E A S A D A
A S A L S	S A L S A
I C S H P	C H I P S
I H C E L V E D R E	C H I L E V E R D E

MEXICAN FOOD SCRAMBLE SOLUTION

CROSSWORD SOLUTION

1	N	2	O	3	P	4	E	5	M	6	A	7	N	8	S	9	A	10	L	11	T
12	B	A	R	N	13	A	D	O	14	T	R	I	O								
15	A	R	I	D	16	T	A	R	17	D	I	E	S	T							
		18	S	19	L	E	P	20	I	R	A	T	E								
21	A	22	L	T	E	R	23	T	24	S	P	S									
25	N	O	I	S	I	E	S	T	26					27	D	28	E	29	N		
30	T	I	N	S	E	L	31	U	32	P	33	S	I	D	E						
34	E	N	E	35	S	36	A	B	O	T	A	G	E								
			37	R	38	E	E	L	39	T	A	M	E	D							
40	I	41	S	42	L	E	S	43	A	44	I	S	L	E							
45	S	H	O	R	T	46	E	S	T	47	E	T	48	C	49	H					
50	N	O	V	A	51	E	K	E	52	S	E	E	S								
53	T	E	E	N	54	R	A	M	55	T	R	O	T								

0	9	8	0			5	2	6				4	1	8	7						
9	6	8	4			5	0	9	0	8			4	3	1	8					
1	4	9	5			1	0	1	3	8			1	8	6	6					
8	2	5	1	6	3	1	7	1	7						0	4	5				
					0	5	1	7		4	3	0	8								
	8	6	9	6	4					7	7	6	0	1	6						
5	9	8	5	0		1	0	3	2	6	2	4	1	7							
8	4	2	2		1	8	9	6	5		6	2	4	3							
1	9	7	3	1	2	8	2	7		9	7	2	4	7							
2	2	1	8	6	5					6	1	1	8	5							
			0	9	7	9		3	3	2	3										
7	7	0				0	3	5	1	0	8	9	7	0	9						
4	6	9	1			2	8	6	3	9			0	6	5	1					
1	8	8	8			6	5	8	1	2			8	5	8	5					
0	4	2	7			4	9	7					1	8	5	7					

NUMBER FILL-IN SOLUTION

**FOURTH OF JULY
WORD SEARCH SOLUTION**



SUDOKU #1 SOLUTION

6	7	8	3	9	5	1	2	4
3	9	1	2	4	6	7	5	8
2	4	5	1	7	8	9	6	3
8	2	9	6	1	3	5	4	7
1	3	7	4	5	9	6	8	2
4	5	6	7	8	2	3	9	1
9	8	2	5	3	7	4	1	6
5	1	3	8	6	4	2	7	9
7	6	4	9	2	1	8	3	5

SUDOKU #2 SOLUTION

1	9	2	3	4	7	8	5	6
8	3	4	6	2	5	7	9	1
5	7	6	9	1	8	2	3	4
2	4	8	5	7	1	3	6	9
6	5	9	2	8	3	1	4	7
3	1	7	4	9	6	5	2	8
4	2	1	8	3	9	6	7	5
9	8	5	7	6	2	4	1	3
7	6	3	1	5	4	9	8	2



Smorgasburg operates the largest open air food markets in the country. The Los Angeles location provides a platform for nearly 100 small businesses curated from the next wave of SoCal's food, beverage, and shopping scene. With a family-friendly atmosphere, delicious food, and beer garden, it's the perfect place to spend a beautiful sunny day in Los Angeles. Find dozens of exciting food vendors and sophisticated shopping from the realms of design, style, craft, wellness, and more! Register online today at cityofglendora.org/register or come in during regular business hours!

Sunday, September 15 | 9:00am-2:30pm
Fee: \$25 | Activity Level: Active

JULY Presentations

Healthy Eating Habits Presented by Optum

Join Optum for this special presentation on healthy eating habits for seniors. Learn how to get and stay healthy as you age, and learn about the benefits of healthy eating on your mind and body!

Thursday, July 18 at 12:30pm-1:30pm

Mindful Art Series Presented by Glendora Public Library

Join the Glendora Public Library for the July installment of the Mindful Art Series. In this class, awaken your inner artist through abstract art that creates a soothing rhythm of balance and serenity.

Thursday, July 25 at 11:00am-12:00pm

ALL presentations are free!
CALL (626) 914-0560 TO REGISTER!

*REMINDER CALLS WILL BE GIVEN
one week in advance!

LEARN TO USE YOUR IPHONE/IPAD BEGINNER & INTERMEDIATE

Learn how to use your mobile Apple products. Participants with little or no technology knowledge can attend the beginner "Learn to Use Your iPhone/iPad" class. The intermediate class will focus on the following topic: *Utilizing Your Apple Watch* and are for participants with basic knowledge or who have taken the beginner class before. For more dates, check out our Summer brochure!

Tuesday, July 9 | FREE

11:30am-12:30pm • Beginner
1:00pm-3:00pm • Intermediate

Call (626) 914-0560 to register!

VOLUNTEER HIGHLIGHT

Georgette Boucher

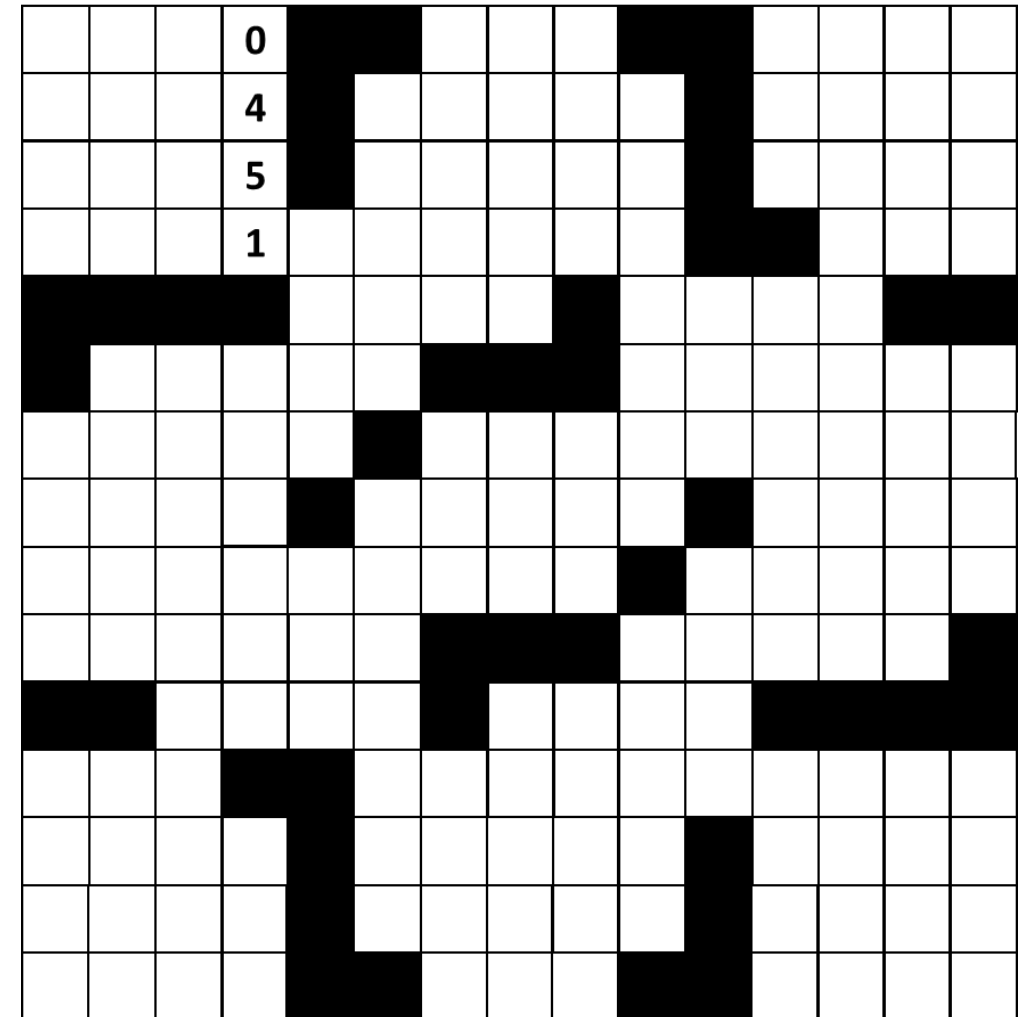


Georgette has been a volunteer since 2017. Her friendly personality is a joy to all participants and staff. A fun fact about her is she creates puzzles in her spare time! She is an essential member to our front desk crew!

INTERESTED IN VOLUNTEERING?
LA FETRA HAS OPPORTUNITIES IN
DIFFERENT AREAS:
RECEPTION DESK, TRIP ESCORTS,
LUNCH PROGRAM, CLASS
INSTRUCTORS
CALL 626-914-8235 TO GET STARTED!

NUMBER FILL-IN PUZZLE

The first number in the grid has been provided to give you a head start. Fill in the numbers from the list where they will fit and check off the numbers as you go.



3 DIGITS

045
092
167
187
188
367
376
441
497
526
770

4 DIGITS

0427
0454
0517
0585
0651
0918
0979
0980
1495
1857
1866
1888
3323
3854
4187
4308
4318
4691
5812
6031
6060
6243
6737
7410
7658
7684
7865

5 DIGITS

8164
8422
8585
8895
9081
9138
9157
9642
9684

6 DIGITS

50908
51354
59850
61185
62092
65812
86964
89492
97247

7 DIGITS

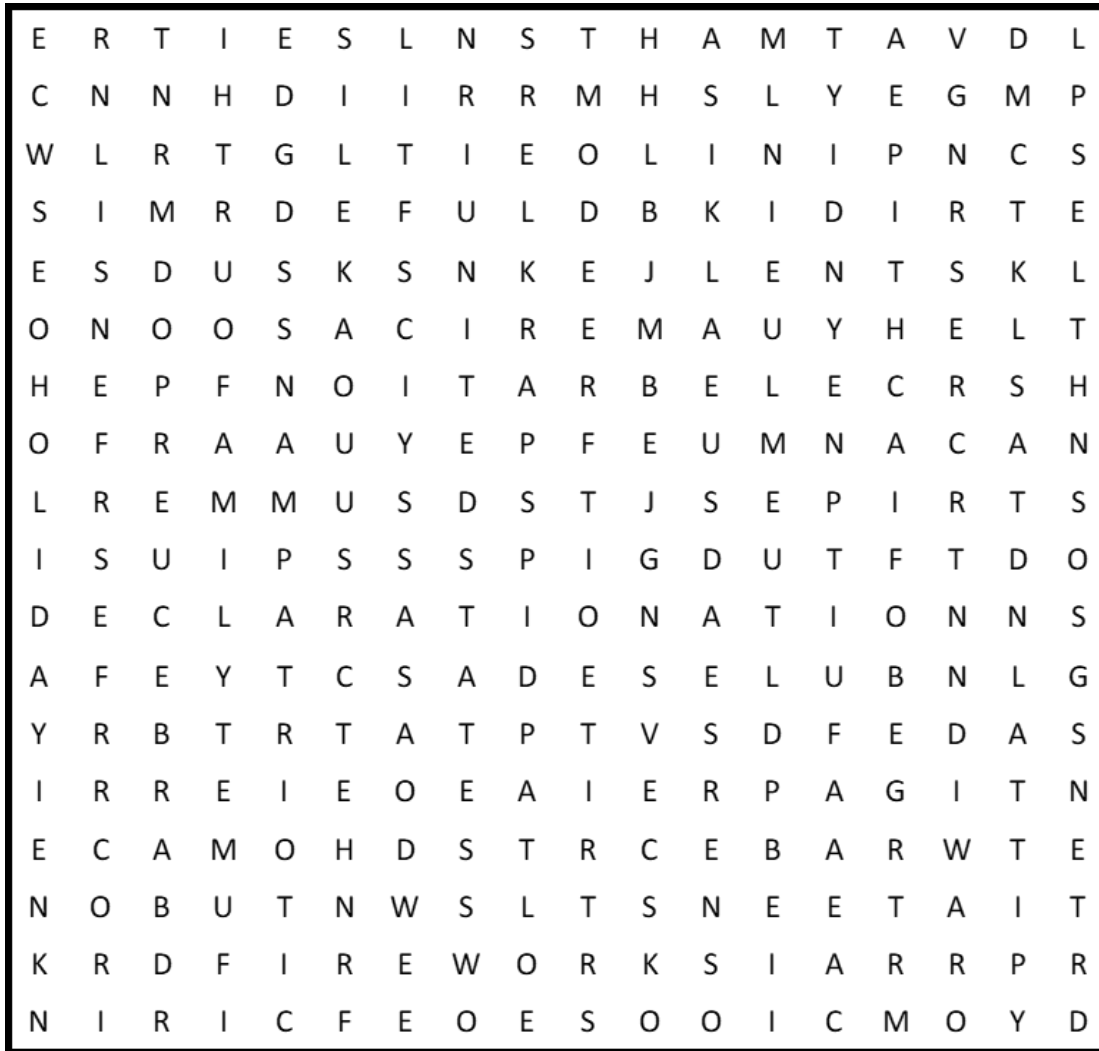
062671
221865
776016
952389
1259026
8874725

9 DIGITS

103262417
197312827
0351089709
1380804228
6827100982
8251631717

Solution is provided in the back.

FOURTH OF JULY WORD SEARCH



AMERICA
 BARBECUE
 BLUE
 CELEBRATION
 DECLARATION
 FAMILY
 FESTIVE
 FIREWORKS
 FLAG



FOURTH
 FREEDOM
 HOLIDAY
 HOT DOGS
 INDEPENDENCE
 JULY
 LIBERTY
 NATION
 PARADE

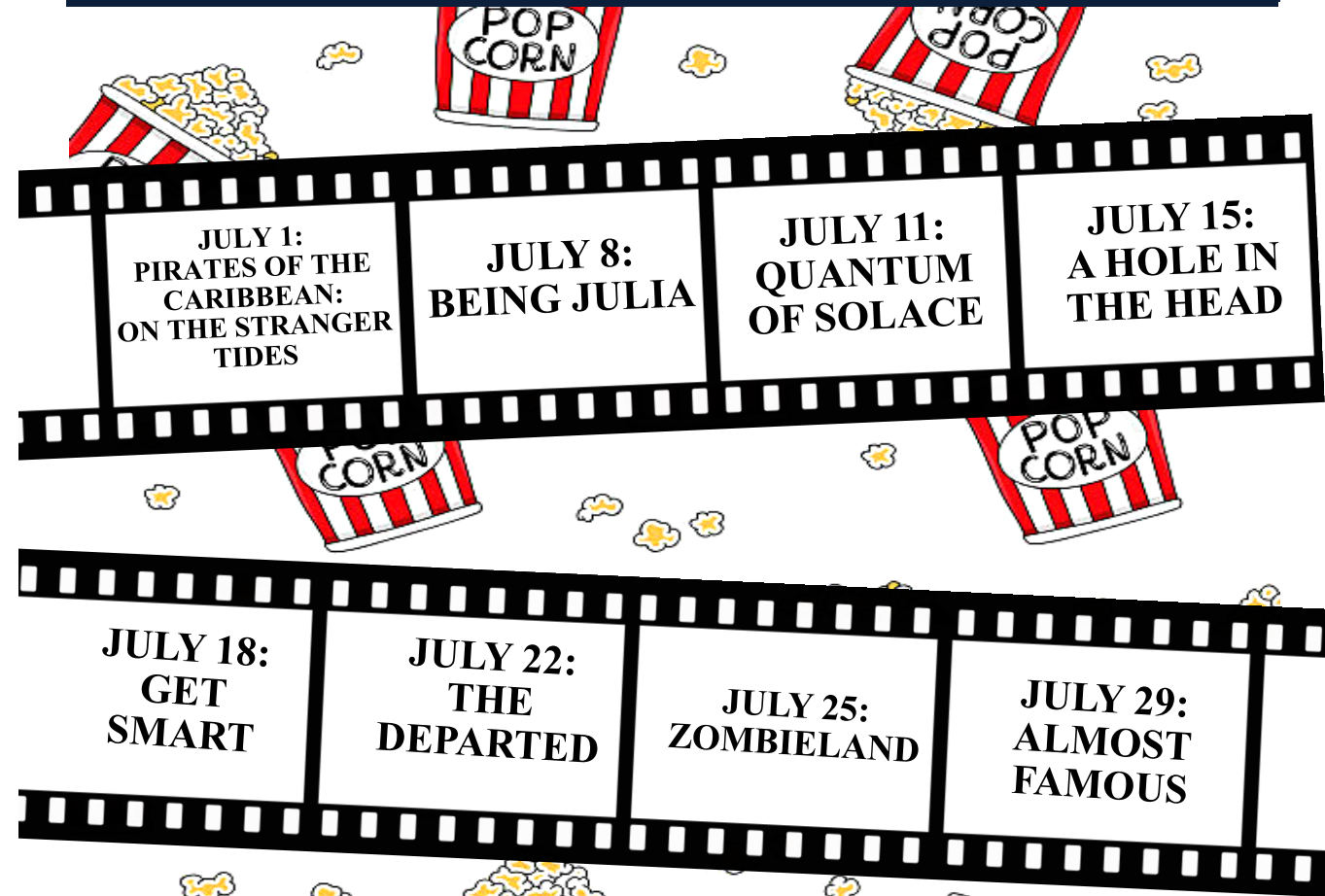


PATRIOTIC
 PICNIC
 RED
 SPARKLERS
 STARS
 STRIPES
 SUMMER
 UNITED STATES
 WHITE



Solution is provided in the back.

LA FETRA MOVIES



The La Fetra Center hosts it's FREE of charge weekly movies on
MONDAYS & THURSDAYS at 1:00pm. Flyers with movie information
 can be found on cityofglendora.org or located at our reception desk.

CENTER WILL BE CLOSED ON THURSDAY, JULY 4



PRESENTED BY PARTNERS OF LA FETRA

BINGO

EVERY FRIDAY!

Doors open at 12:00pm on SAGE A and at 12:45pm on SAGE B.
 Bingo sales are from 12:30pm to 1:15pm. Games will start at 1:30pm.
 Cost is \$7 for the 1st game and \$3 for each additional pack.
 Also, play the exciting POWERBALL JACKPOT for an additional \$1!

Bring your own drinks / individually wrapped snacks.

CROSSWORD PUZZLE

1	2	3	4		5	6	7		8	9	10	11
12					13				14			
15					16				17			
		18		19					20			
21	22					23	24					
25					26					27	28	29
30								31	32	33		
34					35	36						
			37	38					39			
40	41	42				43	44					
45					46				47		48	49
50						51				52		
53						54				55		

Book Discussion Group

First Thursday of every month
 10:00am-11:00am

JULY 11 DISCUSSION **AUGUST 1 SELECTION**

Meeting will be held on 2nd Thursday in July due to Independence Day

GLENDORA GENEALOGICAL GROUP

If you are interested in family history, we invite you to attend the Glendora Genealogical Group.

The July meeting will be a hybrid in person/Zoom meeting. The speaker is Amber Oldenberg and the topic is "Genealogy Research Your Family For Free."

For more information, please contact Pat Chavarria at lorman1237@gmail.com

TUESDAY JULY 23 AT 6:00PM

- Across:**
- 1. Slangy refusal
 - 5. Adult male
 - 8. Pepper's companion
 - 12. Rural building
 - 13. Hubbub
 - 14. Group of three
 - 15. Moistureless
 - 16. Latest
 - 18. Slumber
 - 20. Incensed
 - 21. Tailor
 - 23. Recipe measures (abbr.)
 - 25. Least quiet
 - 27. Bear's hideaway
 - 30. Christmas glitter
 - 31. ___ down (turned over)
 - 34. Compass pt.
 - 35. Deliberately damage
 - 37. Whirl
 - 39. Made docile
 - 40. Small landmasses
 - 43. Theater walkway
 - 45. Briefest
 - 47. Engrave with acid
 - 50. Bossa ___
 - 51. Get by
 - 52. Perceives
 - 53. Adolescent
 - 54. Male sheep
 - 55. Pony's gait

- Down:**
- 1. Lakers' league (abbr.)
 - 2. Rowing implement
 - 3. Unspoiled
 - 4. Eternal
 - 5. Chess term
 - 6. Modifies
 - 7. Likewise not
 - 8. Mixes
 - 9. Zone
 - 10. "Schindler's ___"
 - 11. Carry around
 - 17. Quick swim
 - 19. New York's canal
 - 21. Chip in
 - 22. Cut of beef
 - 24. Toe trauma
 - 26. Different
 - 27. Twice the radius
 - 28. Rim
 - 29. Require
 - 32. Cooking vessels
 - 33. Least fresh
 - 36. Nome's state
 - 37. Televised again
 - 38. MA time zone
 - 40. Fails to exist
 - 41. Pump, e.g.
 - 42. Deep affection
 - 44. Thing
 - 46. Poet's eternity
 - 48. Corporate VIP
 - 49. Truman's monogram

Solution is provided in the back.

SUDOKU

Sudoku is played on a grid of 9 x 9 spaces. Within the rows and columns are 9 "squares." Each row, column and square (9 spaces each) needs to be filled out with the numbers 1-9, without repeating any numbers within the row, column or square. Each Sudoku grid comes with a few spaces already filled in.

SUDOKU #1

	7					2	
		1			6		8
2		5			8	9	
8					3	5	7
	3	7		5		6	8
4		6	7				1
		2	5			4	6
5			8			2	
	6						3

*GOOD LUCK
AND
HAVE FUN!!*

SUDOKU #2

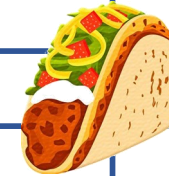
	9		3	4	7	8	5	
8							9	
				1	8			4
			5			3		
6	9	2		3	1			7
	7			6				
4			8	3				
	8							3
	6	3	1	5	4		8	



Solution is provided in the back.

MEXICAN FOOD WORD SCRAMBLE


T D T O A S A	
E A C H I N D L A	
C A O T	
B U R O I R T	
T I U S A T Q O	
C H E I L L R E N O L E	
A M L T A E	
U A Q I E S L A D L	
A L A T U S F	
B N S E A	
N O H C S A	
I R E C	
I M G A H C A H I C N	
G A C E U A L M O	
C A E N R A D A S A	
A S A L S	
I C S H P	
I H C E L V E D R E	



Solution is provided in the back.

Monday	Tuesday	Wednesday	Thursday	Friday
8:45 am Sing for Joy 10:00 am YWCA Case Management 10:00 am Journey Through Grief Group 11:30 am Nutrition 12:30 pm Canasta 12:30 pm M-W-F Gamers 1:00 pm Ping Pong <i>(Sign Up Required)</i> 1:00 pm Monday Movies	8:00 am Int./Adv. Pool Players 8:45 am Bridge Tournament 9:00 am Tai Chi Chuan <i>(Sign Up Required) (Session ends 7/11)</i> 9:00 am Sharing Memories 11:00 am Computer Adventure <i>(Sign Up Required) (Session 1 ends 7/11) (Session 2 starts 7/16)</i> 11:30 am Nutrition 12:30 pm Beading Buddies 12:30 pm Pinochle 4:00 pm Balance & Mobility <i>(Sign Up Required) (Session ends 7/23)</i> 6:00 pm Country Line Dancing—Beginner <i>(Sign Up Required) (Session starts 7/2)</i> 7:15 pm Country Line Dancing—Intermediate <i>(Sign Up Required) (Session starts 7/2)</i>	9:00 am Glendora After Stroke Center 9:00 am Patch, Pin, & Purl 9:00 am Intermediate Bridge Class 10:30 am Nuts About Needlepoint (2 nd /4 th week) 11:30 am Nutrition 12:30 pm M-W-F Gamers 1:00 pm Bunco (1 st /3 rd /5 th week) 1:00 pm Chair Yoga <i>(Sign Up Required) (Session ends 7/24)</i> 1:30 pm International Community Club 1:30pm Beginner Bridge Class	8:30 am Party Bridge 8:30 am Quilting Therapy (2 nd /4 th week) 11:30 am Nutrition 12:30 pm Canasta 1:00 pm Current Events Discussion Group 1:00 pm Ping Pong <i>(Sign Up Required)</i> 1:00 pm Thursday Movies 4:00 pm Balance & Mobility <i>(Sign Up Required) (Session ends 7/23)</i>	8:00 am Int./Adv. Pool Players 8:45 am Bridge Tournament 11:30 am Nutrition 12:30 pm M-W-F Gamers 12:30 pm Pinochle 1:30 pm Bingo



Monday	Tuesday	Wednesday	Thursday	Friday	Saturday
1 10:00 am Legal Clinic for Seniors <i>(FREE - Sign Up Required)</i>	2 9:30 am Glendora Neighborhood Group of the American Sewing Guild	3 1:00 pm Bunco	4 FACILITY CLOSED—FOURTH OF JULY 	5	6
8	9 11:30 am iPhone/iPad Beginner Class <i>(FREE - Sign Up Required)</i> 1:00 pm iPhone/iPad Intermediate: <i>(FREE - Sign Up Required)</i>	10 7:30 am TRIP: Harrah's Casino <i>(Sign Up Required)</i> 10:30 am Nuts About Needlepoint	11 8:30 am Quilting Therapy 10:00 am Book Discussion Group	12	13
15	16	17 1:00 pm Bunco	18 12:30 pm PRESENTATION: Healthy Eating Habits <i>(FREE - Sign Up Required)</i>	19	20
22 1:00 pm LA Regional Food Bank	23 6:00 pm Glendora Genealogical Group	24 10:30 am Nuts About Needlepoint 11:00 am Free Notary Service	25 10:30 am PRESENTATION: GPL Art Presentation <i>(FREE - Sign Up Required)</i> 4:00 pm TRIP: Laguna Pageant of the Masters <i>(Sign Up Required)</i>	26	27
29	30	31 1:00 pm Bunco			

*DAY TRIPS DEPART FROM THE CITY PARKING LOT AT CULLEN AND MOUNTAIN VIEW ACROSS FROM FINKBINER PARK. YOU MUST PRE-REGISTER FOR EACH TRIP. FULL DAY TRIP INFORMATION CAN BE FOUND IN THE RECREATION & HUMAN SERVICES ACTIVITY GUIDE.